

CIGB

Churches' Industrial Group
Birmingham
175 Harbourne Park Road,
Harbourne, B17 0BH

Tel: 0121 426 0425 /0426
Fax:0121 428 1114

Barbara Hayes
(Team Leader)
cigb@birmingham.anglican.org



*supporting the
workplace*

Newsletter

November
2010

In this Issue:

*Introduction to
workplace Chaplaincy*

*Airport Chaplaincy
celebrates 'one world
week'*

*Good news for
manufacturing*

*Exciting and
challenging ministry*

Really weird

'Introduction to workplace Chaplaincy.'

'Gosh I have really gained from the 4 weeks of the Chaplaincy Course and looking forward to the session next Monday. Each session has been well presented and relevant. It has been good to meet others and learn from them. I would highly recommend the course to other Readers including those in paid work. For most in paid work an evening course would be needed as I am very fortunate to have a flexible job. Super.'

Every year CIGB runs courses to train new workplace chaplains. This year 10 people completed the 5 introductory sessions. Some already knew

what Chaplaincy they are heading towards and others were still exploring. As always, participants came from diverse backgrounds – nursing, town planning, industrial chemist, teaching, clergy and lay. As always, it's the group that makes the experience, with opportunities to share and to hear from existing workplace chaplains.

The course is followed up with opportunities to work shadow an existing chaplain and to decide whether this is the ministry for you. The course can be challenging but the feedback positive, as you can see.

Airport Chaplaincy celebrates 'One World Week'

An airport is a global community and when you say 'It's 'One World Week' when we remember that we're all human beings living on one planet, so it would be good if we could understand each other better 'people light up with recognition. Unfortunately they also quickly acknowledge that's not how the world is. Understanding each other is a hope, an aspiration rather than a reality.

To remind people of our 'One World' the airport chaplaincy organised an extended 'coffee morning' and invited companies and individuals to bring cakes and food tradition to their place of origin. It was a great success with 'Noah's pudding' from Turkey, dates

from the Arab Emirates, apple cake from Norway, Selkirk Bannock from Scotland, Bee sting cake from Germany, Welsh cakes, fruit cake with cheese from Yorkshire and much more. People lent us flags, wrote 'welcome' in twenty languages and there was a really good feeling as staff from organisations across the airport got involved and got to know each other better.

The chaplaincy team cares for passengers and staff at the airport, responding to pastoral and spiritual needs and contributing to the airport being a good place to work because workplace communities are as important to our well being as the communities where we live.

Good news for Manufacturing

After months of uncertainty Tata, the Indian owner of JLR, has committed to retaining both its factories in Birmingham and Solihull. In uncertain times in so many places it's good news for the CIGB area and beyond. The deal offers security for 10 years and although the financial crisis reminded us that things do not always go to plan, it is good to have such a clear statement of intent. People can be confident in investing their skills and commitment into the future and so trust grows.



'Really weird'

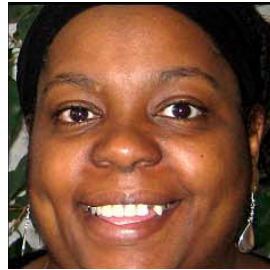


That's how one member of the Kings Norton Deanery synod summed up how it feels to pass the former Rover site in Longbridge, at first flattened and now slowly being re-developed. The parishes of the Anglican Deanery surround the site and, with ecumenical partners, the church can be a key partner in developing 'A new heart for Longbridge' - a heart which is not just about infrastructure but about how we relate to one another and build communities.

CIGB drew together a working group to develop workplace chaplaincy to the new development and to link with local churches to contribute to the new geography. Every church has to think about how church will look in 10 years time, but it is particularly relevant in regeneration areas.

Having gained the support of the main developer and Shepherd construction who are building Bournville College, Stephen Plant is developing chaplaincy on site and the working group is engaging the wider church in exploring possibilities for the future.

Exciting and Challenging Ministry



"This exciting and challenging ministry by which the church engages with the world in which it lives and struggles to be relevant, is groundbreaking stuff which chaplains have been doing long before new initiatives and 'in words' such as pioneer ministry and fresh expression came on the scene. Chaplaincy seeks and continues to be an opportunity to journey in the everyday, not coming with any hidden agenda's. Chaplaincy is a mutual meeting of face to face encounters where the realities of life meet with those who feel they have something of hope to share, something of good news."

The paragraphs above were my thoughts on the work of Chaplaincy in the city given at my commissioning service earlier this year. It has now been a year since my appointment as Birmingham City Centre Retail Chaplain, and I still have a sense of the enormity of the work, but God has clearly been visible. We now have chaplaincy to the Bullring, Birmingham Markets and Pallasades. We are currently in conversations with Marks and Spencer's and support Street Ministry, to Broad Street, all of which is really exciting. I also continue to be Chaplain to Birmingham Town Hall and Symphony Hall, which enables me to have a sense of stability in the midst of the retail world, which can be a place of uncertainty, even for a chaplain!

The team is growing and without the commitment of chaplains, the work couldn't be done. I am always encouraged by their continual commitment to this ministry and work in the city. Please continue to pray for the work of Chaplaincy in the city, as we continue to be a listening presence, seeking the welfare of the city.

